



LISA BROWN

2011 SPRING/SUMMER

GLOBAL ELEMENTS



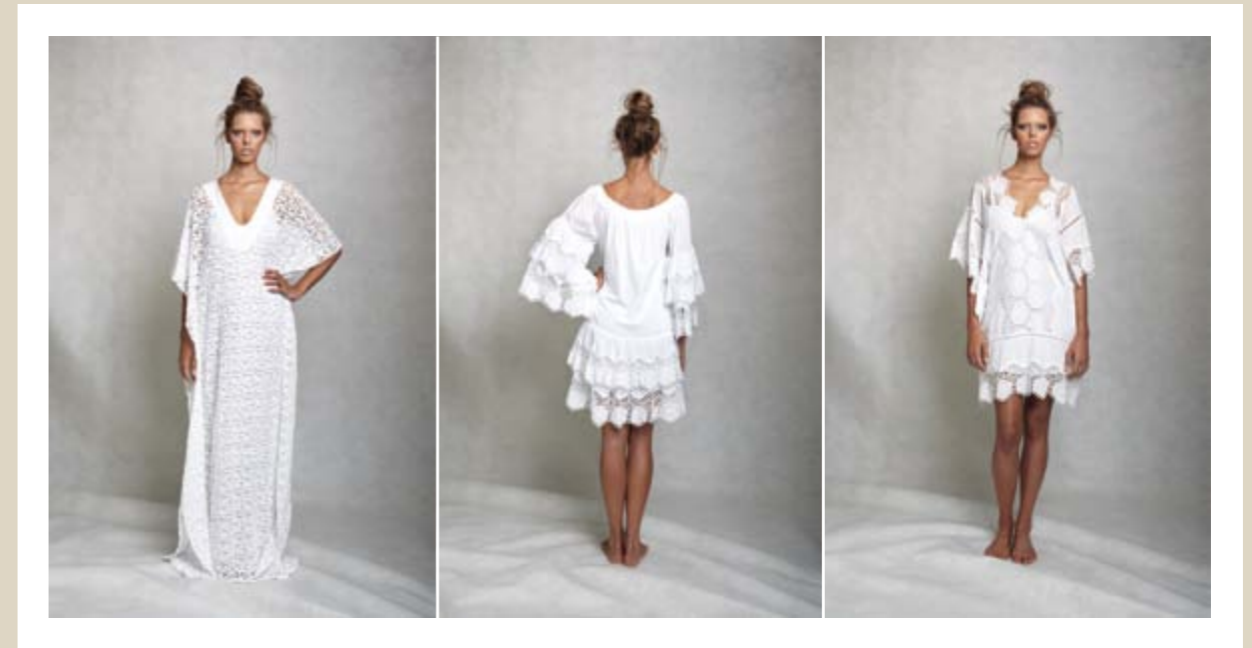


WET SAND AFTER A DUSTING OF SWEET SUMMER RAIN
THE RESTLESS RHYTHM OF THE SEA
DISTANT SHORES AND FARAWAY PLACES
LAUGHTER FROM YOU ABOUT A MEMORY OF ME
A WINK FROM A STAR AS IT CATCHES THE MOONLIGHT
SILK BRUSHING SKIN AS WE DANCE
DELICATE FLOWERS ON A BLUSTERY SUNDAY
A DREAM FOR TOMORROW THE MYSTERY OF CHANCE
INSPIRED THE NEW COLLECTION BY LISA BROWN

Right

TSUBAKI [FLESH SM/ML]





Left

KIMONO - SLIP NOT SHOWN [WHITE SM/ML]

Above - left to right

TSUBAKI [WHITE SM/ML]

BLOSSOM COTTON EMBROIDERED LACE [WHITE SM/ML]

RIKO COTTON EMBROIDERED LACE [WHITE SM/ML]

Right

YASU INDIAN HAB TOP [WHITE S/M/L]
- ETSU PANT [STRING SILK S/M/L]

Below - left to right

SHOU TOP [NATURAL SM/ML]
- ETSU PANT [STRING SILK S/M/L]
NATSUMI DRESS [SEAPEARL AND CREAM S/M/L]
NATSUMI TOP [SEAPEARL AND CREAM S/M/L]
- ETSU PANT [STRING SILK S/M/L]





Right

ELIZI DRESS [CREAM S/M/L]

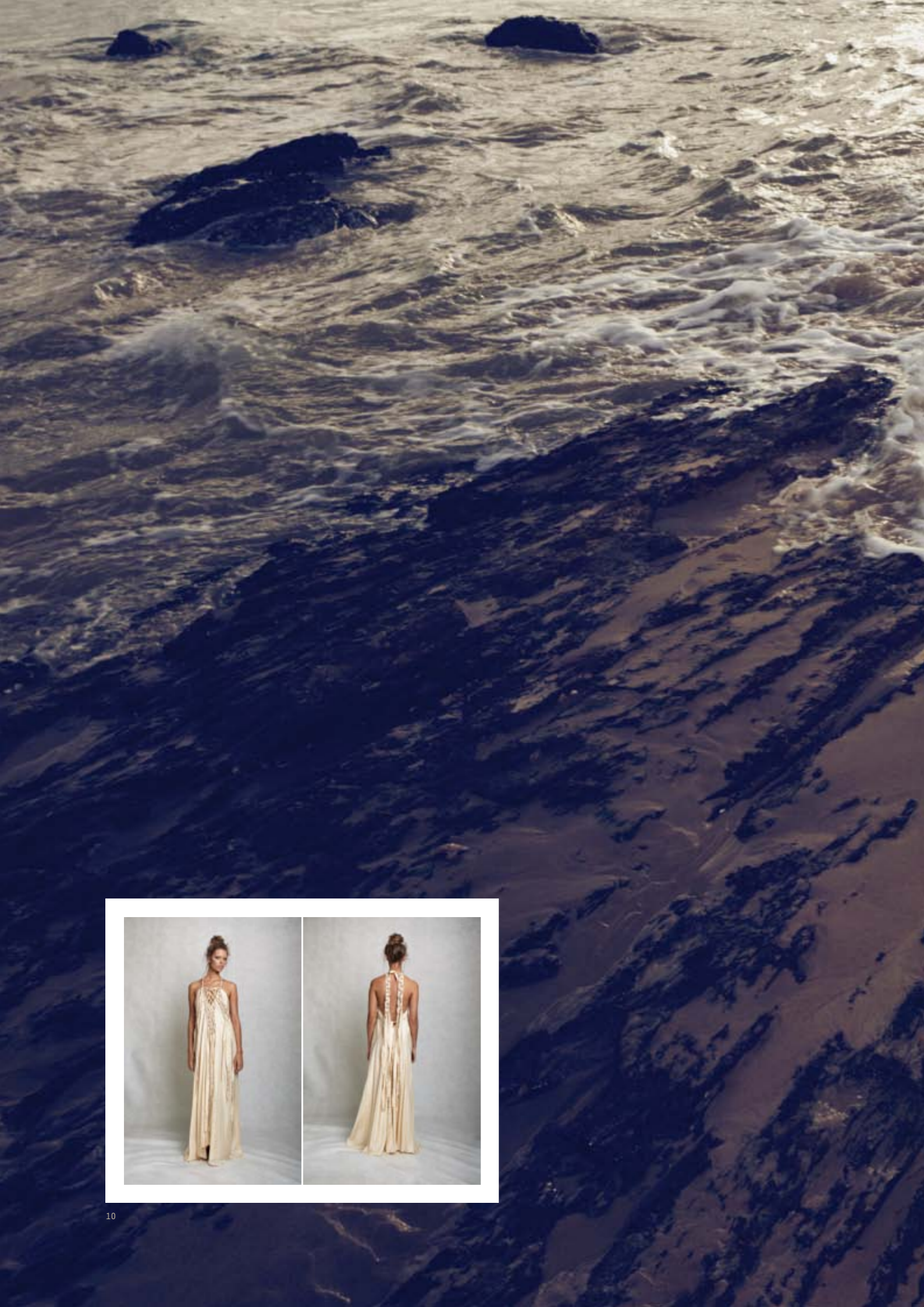
Above - left to right

ELIZI DRESS BACK [CREAM S/M/L]

EMI SHORT DRESS [CREAM SM/ML]

EMI TOP [WHITE SM/ML]





Left

YOSHI FRONT AND BACK [SEAPEARL OS]

Above - top to bottom

MIYA TOP [FLESH OS]

YASU SKIRT [FLESH S/M/L]

MIYA LONG DRESS FRONT AND BACK

[FLESH OS]



Left

MINORU BACK [ROSA AND CREAM OS]

Above - left to right

YORIKO SHORT COTTON DRESS [PEACH AND CREAM S/M/L]

MINORU FRONT [ROSA AND CREAM OS]

YORIKO LONG SILK DRESS [SEAPEARL AND CREAM S/M/L]

Right

SAKURA [CHERRY BLOSSOM OS]

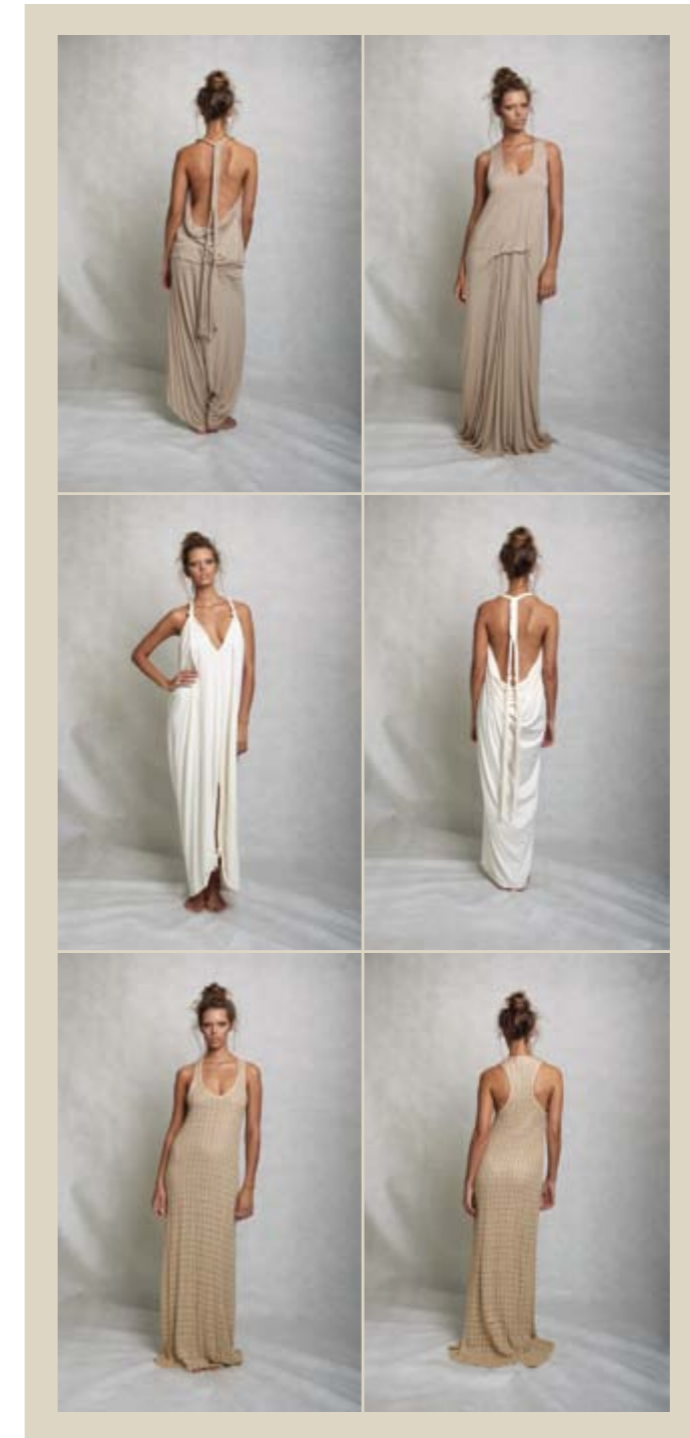
Below - left to right

HANOKO FRONT AND BACK [CHERRY BLOSSOM SM/ML]

UME DRESS [CHERRY BLOSSOM SM/ML]

SAKURA BACK [CHERRY BLOSSOM OS]





Left

ISAMU TOP [SAND OS] - ISAMU PANT [SAND S/M/L]

Above - left to right

ISAMU TOP BACK [SAND OS] - ISAMU PANT BACK [SAND S/M/L]

KURI DRESS [SAND SM/ML]

ISAMU ORGANIC COTTON LONG DRESS FRONT [CREAM OS]

ISAMU ORGANIC COTTON LONG DRESS BACK [CREAM OS]

SHOU DRESS FRONT [NATURAL SM/ML]

SHOU DRESS BACK [NATURAL SM/ML]



Left - left to right

- YASU LONG DRESS [PEONY FLORAL S/M/L]
- NADESHIKO FRONT [PEONY FLORAL SM/ML]
- NADESHIKO BACK [PEONY FLORAL SM/ML]
- MISAKI [ROUGE S/M/L]
- MISAKI BACK [ROUGE S/M/L]
- YASU LONG DRESS [CHINA BLUE S/M/L]
- YASU LONG DRESS BACK [CHINA BLUE S/M/L]
- YASU LONG DRESS [MIST S/M/L]
- AIKO INDIAN HAB BLOUSE [WHITE SM/ML]
- YASU SKIRT [CHINA BLUE S/M/L]
- UME DRESS [CHINA BLUE SM/ML]
- AMARANTE LONG DRESS FRONT [CHINA BLUE SM/ML]

Right - left to right

- SUZUME LONG DRESS [CHARTREUSE OS]
- SUZUME LONG DRESS BACK [CHARTREUSE OS]
- LINSY SHORT KAFTAN [LANDSCAPE SM/ML]
- MISAKI [LANDSCAPE S/M/L]
- MIDORI LONG [CHARTREUSE OS]
- SUZUME TOP [CHARTREUSE OS]
- ETSU PANT [CHARTREUSE S/M/L]



Below - left to right

NEW DANIELLE DRESS COTTON EMBROIDERED LACE [WHITE S/M/L]

POPPY LONG COTTON EMBROIDERED LACE [WHITE OS]

POPPY LONG COTTON EMBROIDERED LACE BACK [WHITE OS]

YUKI COTTON EMBROIDERED LACE [WHITE SM/ML]

AMARANTE LONG DRESS [BIRDS OF PARADISE SM/ML]

KOUKI JUMPSUIT [BLACK S/M/L]

YORIKO SHORT SILK DRESS [BLACK S/M/L]

AMAIA STRAPLESS DRESS [BIRDS OF PARADISE S/M/L]

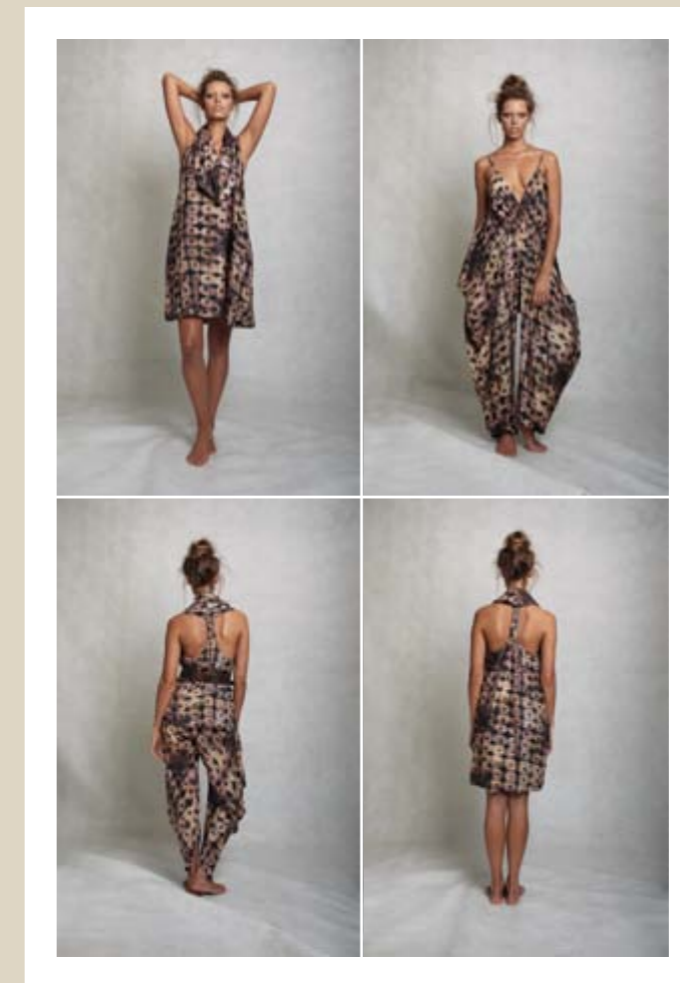
ELIZI BRIDAL [WHITE S/M/L]

ELIZI BRIDAL BACK [WHITE S/M/L]

NORI MAXI DRESS FRONT [WHITE S/M/L]

NORI MAXI DRESS BACK [WHITE S/M/L]





Left

MORIKO TOP [SHIBORI SM/ML]
 - ETSU PANT [SHIBORI S/M/L]

Above - left to right

MORIKO DRESS [SHIBORI SM/ML]
 UME JUMPSUIT [SHIBORI SM/ML]
 MORIKO TOP BACK [SHIBORI SM/ML]
 - ETSU PANT BACK [SHIBORI S/M/L]
 MORIKO DRESS BACK [SHIBORI SM/ML]



Right

ANIKA LONG DRESS [SEA PEARL AND CREAM S/M/L]

Left - read left to right

BLOSSOM SILK MESH [CREAM SM/ML]

- KIMIKO PANT [RAW CREAM SILK S/M/L]

POPPY TOP COTTON EMBROIDERED LACE [WHITE OS]

- KIMIKO PANT [RAW CREAM SILK S/M/L]

POPPY TOP HAND DYED [PEACHES AND CREAM OS]

- KIMIKO PANT [RAW CREAM SILK S/M/L]

YASU LONG DRESS HAND DYED [PEACHES AND CREAM S/M/L]

YASU LONG DRESS HAND DYED BACK [PEACHES AND CREAM S/M/L]





Left

EMI TOP [PEACH AND CREAM SM/ML]

- ELIZI SKIRT [CREAM S/M/L]

LISA BROWN

MEDIA ENQUIRIES - NMEDIA, PHONE 0416 867 925 EMAIL NARELLE@NMEDIA.COM.AU

[ACKNOWLEDGMENTS] STUDIO IMAGES BY MELISSA GIBSON, CAMPAIGN IMAGES BY GEORGES ANTONI, TALENT PHOEBE GRIFFITHS - CHADWICK MODEL AGENCY, HAIR AND MAKE-UP TANIA TRAVERS, DESIGNED AND PRODUCED BY SIXTY DESIGN.





LISA BROWN

MOST STYLES IN THIS SEASON ARE AVAILABLE IN A RANGE OF COLOURS AND PRINTS, PLEASE DO NOT HESITATE TO CONTACT HEAD OFFICE ON 1300 103 160 IF YOU HAVE ANY QUERIES.

1300 103 160 WWW.LISA-BROWN.COM.AU